



# Amalgamated Civil & Plant Hire

Lot 2041 Patstone Road Collie WA 6225

**ABN 99 631 049 388**

[terry@acph.com.au](mailto:terry@acph.com.au)

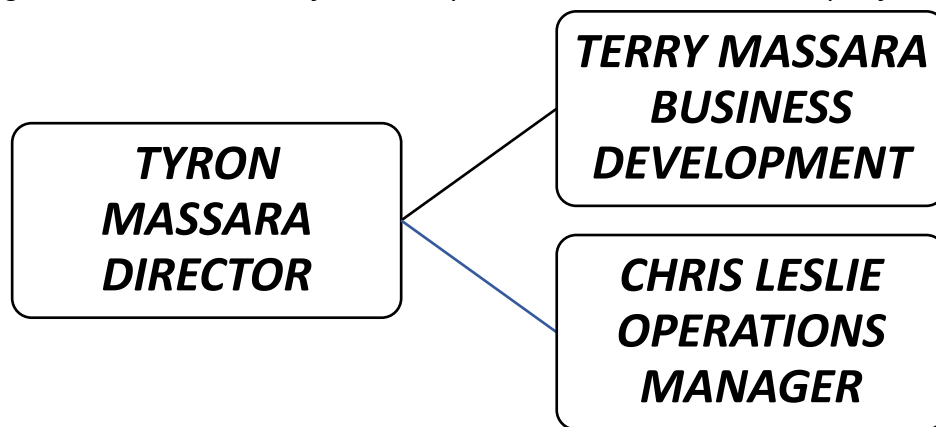
Ph. 04290109093

Amalgamated Civil & Plant Hire (“ACPH”) is a privately owned West Australian owned company established in 2019 to provide civil services and plant hire to local industry.

ACPH has a fully staffed workshop and office complex located in the town of Collie which allows us to provide the best service to our key clients who come from a range of industry sectors including mining, construction, power generation and government departments.

Our quality fleet includes an extensive selection of equipment that are available for work. To ensure downtime is minimised we have a mobile maintenance backup service which operates 24 hours a day, seven days a week.

We also supply gravels, rock and sands from local pits which meet main roads specification



## Mission Statement

*“To be recognised as the supplier of choice in the provision of civil works and plant hire services to the commercial and industrial sectors”*

We will achieve this by providing:

- ✓ Cost competitive services
- ✓ Focus on safety performance
- ✓ Total commitment to customer satisfaction and loyalty
- ✓ Commitment to maintain exceptional levels of customer service
- ✓ Reliability of service through continuous improvements to all facets of our business

## Safety and Environment

- The health and safety of our employees, our customers and any possible effects on the environment has priority in all tasks undertaken by our company.

## People

- We will achieve first class results by establishing flexible and productive partnerships with our customers through total commitment and support of our people.

## Customer Focus

- We are totally committed to achieving and exceeding our customer’s needs and expectations.



# Amalgamated Civil & Plant Hire

Lot 2041 Patstone Road Collie WA 6225

**ABN 99 631 049 388**

[terry@acph.com.au](mailto:terry@acph.com.au)

Ph. 04290109093

## Market Focus

- *Our success will be dependent on providing and maintaining exceptional levels of service and competitive prices to all our customers.*

## Integrity and Commitment

- *At all times we will be open, honest and respectful of our employees, customers and contractors in all dealings.*



- *ACPH has the capacity to provide civil works and plant hire services for a wide range of civil, mining and government projects.*
- *We can provide project services with dry hire, wet hourly hire, lump sum or schedule of rates for any customer's needs.*
- *ACPH have a valuable labour base of employees with many experienced operators able to carry out a variety of tasks and operate equipment required for specialised activities.*
- *We have the ability to provide 24/7 services to many clients who require that special need when the unplanned happens. Our dedicated work group provides labour, plant and on-call mechanical services when you need it.*

## **Activities that ACPH have competence to carry out safely and professionally include:**

- Road construction and maintenance*
- Installation of drainage and stormwater services*
- Dam construction in both agriculture and mining*
- Installation of electrical services*
- Crushing and screening services*
- On and off-road haulage*
- Clearing and stripping of vegetation*
- Construction of river crossings*
- Rehabilitation works*
- Dust suppression*
- Construction in the domestic and commercial sectors*
- Hire of mobile and fixed plant and equipment for mining and construction*
- Labour hire for all activities including, project management, supervision and skilled and competent operators*



# Amalgamated Civil & Plant Hire

Lot 2041 Patstone Road Collie WA 6225

**ABN 99 631 049 388**

[terry@acph.com.au](mailto:terry@acph.com.au)

Ph. 04290109093



*Crushing and screening operations.*

*Gravel and Sand Pits*



*Drainage and Pitching Rock  
(50-150mm, 300mm, 400mm)*

*Roadbase and gravel supplies  
(MRD spec)*







# Amalgamated Civil & Plant Hire

Lot 2041 Patstone Road Collie WA 6225

ABN 99 631 049 388

[terry@acph.com.au](mailto:terry@acph.com.au)

Ph. 04290109093



*Sand Supplies*

## *Civil Works*





# Amalgamated Civil & Plant Hire

Lot 2041 Patstone Road Collie WA 6225

**ABN 99 631 049 388**

[terry@acph.com.au](mailto:terry@acph.com.au)

Ph. 04290109093



*Culvert Jetting  
Equipment*